

Post Hurricane Maria Exodus: Three Years After

JENNIFER HINOJOSA
RESEARCH ASSOCIATE
CUNY HUNTER COLLEGE

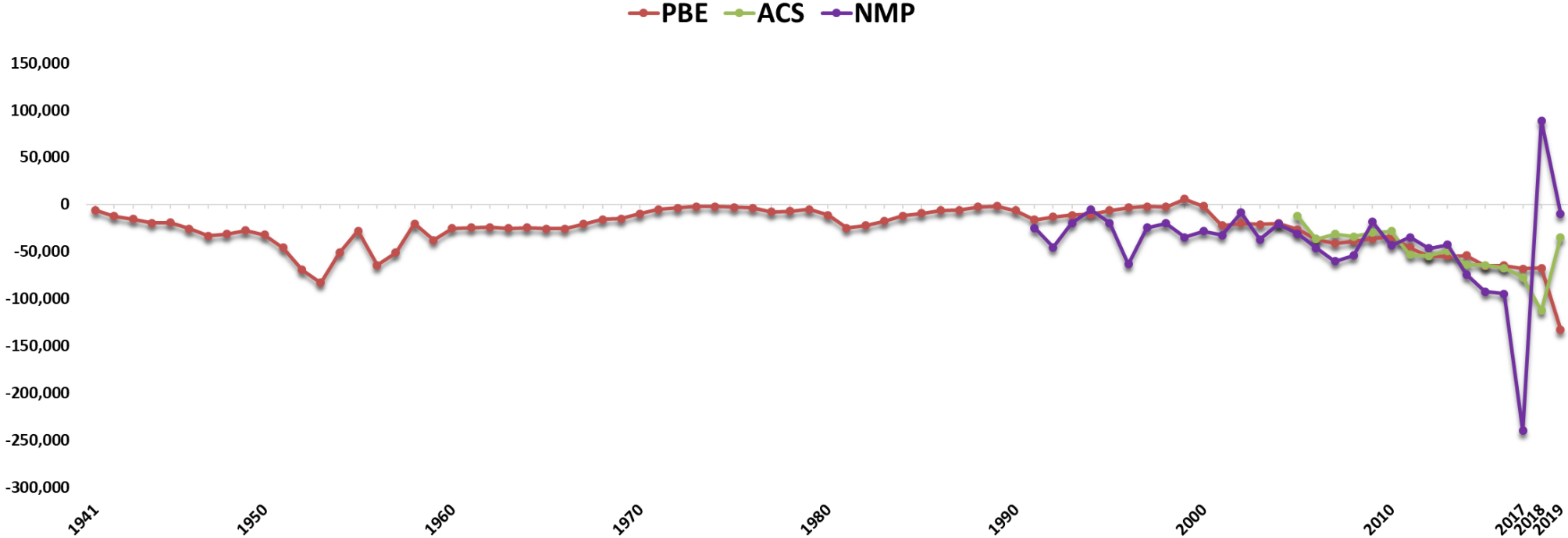
The Exodus

- The post Hurricane Maria exodus represents one of the **most significant movements of Puerto Ricans to the U.S. mainland** in the island's history in terms of **both volume and duration**.
- What is most significant about the 2019 data from the 2019 American Community Survey (1-year estimates) is **that migration numbers were lower than 'pre-Hurricane Maria' levels**.
 - According to the recently released 2019 American Community Survey (1-year estimates), a total of 66,021 residents relocated to the U.S. mainland and 31,144 returned to Puerto Rico for a net migration of 34,877 people.
 - By comparison, in 2018, the year after Hurricane Maria made landfall on the island, 133,451 residents of the island relocated to the United States and 20,900 returned to Puerto Rico for a net migration of 112,551.

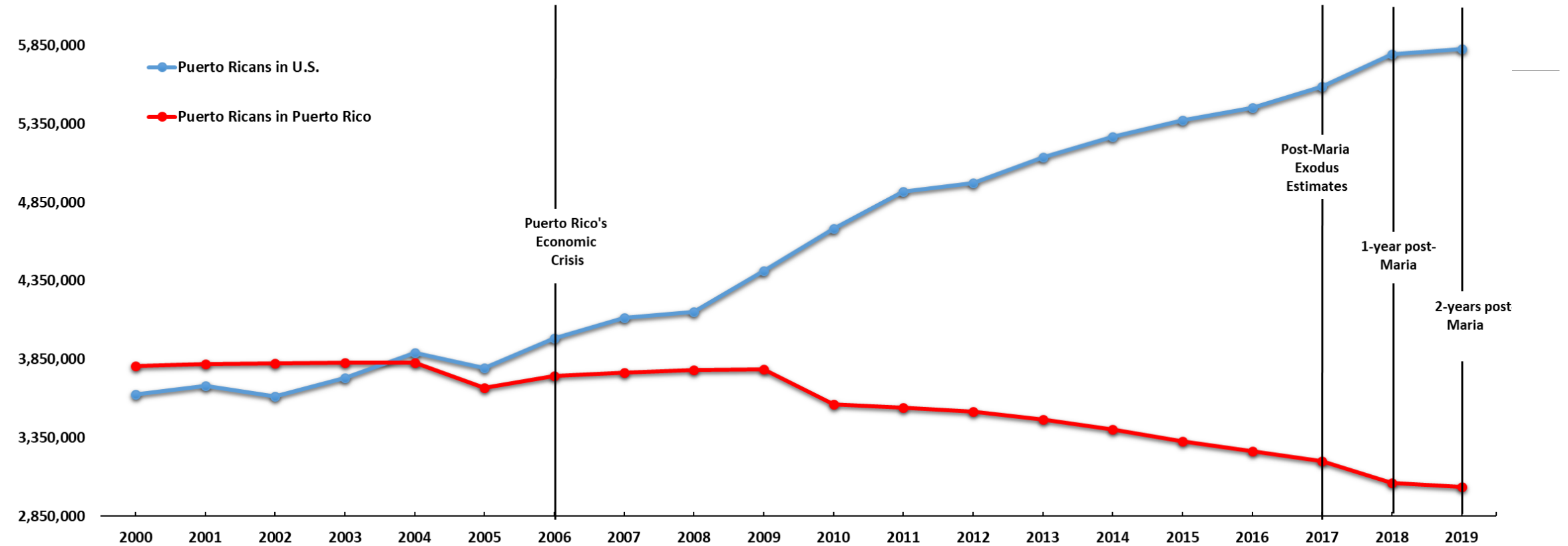
United States Population by Major Ethnic Groups, 2017 - 2019

	2017	2018	2019	Absolute Change	Percent Change
Total Population	325,719,178	327,167,439	328,239,523	1,072,084	0.3%
Non-Hispanic White	197,285,202	197,033,939	196,789,401	-244,538	-0.1%
Non-Hispanic Black	40,129,593	40,305,870	40,596,040	290,170	0.7%
Hispanic or Latino (does not include Puerto Ricans)	53,257,470	53,972,178	54,653,040	680,862	1.3%
Puerto Ricans in US	5,588,664	5,791,453	5,828,706	37,253	0.6%
Puerto Rico (Puerto Ricans only)	3,201,679	3,064,018	3,038,919	-25,099	-0.8%
Puerto Rico (All)	3,337,177	3,195,153	3,193,694	-1,459	-0.05%

Estimated Migration Flows from Puerto Rico to the U.S., 1941-2019



Puerto Rican Population in Puerto Rico and U.S.



- Puerto Rico's population continues to decline, even if slightly, while Puerto Ricans in the U.S. continue to grow.
- Since Hurricane Maria struck the island, a massive out-migration in a short-period of time occurred.
- However, it is clear from this graphic that long-term migration trends are expected to continue the trajectory of the 'economic crisis period.'



Top 10 States: Gains & Loss

	2018	2019	Change	Percent Change (%)
Florida	1,187,437	1,190,891	3,454	0%
New York	1,070,071	1,096,823	26,752	3%
Pennsylvania	477,312	493,255	15,943	3%
New Jersey	488,181	455,615	-32,566	-7%
Massachusetts	329,713	340,893	11,180	3%
Connecticut	298,006	302,027	4,021	1%
Texas	214,765	239,157	24,392	11%
California	226,738	226,314	-424	0%
Illinois	206,543	207,109	566	0%
Ohio	137,104	130,700	-6,404	-5%

GAINS: New York (+26,752), Texas (+24,392), Pennsylvania (+15,943), and Massachusetts (+11,180)

MODEST GROWTH: Connecticut (+4,021), Florida (+3,454), and Illinois (+566)

LOSS: New Jersey (-32,566)

Migration from Puerto Rico to the Top 10 States, 2019

	Migration from Puerto Rico	Percent (%)
United States	66,021	100%
Top 10 States	46,879	71%
Florida	14,657	22%
Texas	9,352	14%
Connecticut	4,280	6%
Pennsylvania	4,028	6%
Massachusetts	3,043	5%
New Jersey	3,036	5%
Ohio	2,695	4%
North Carolina	1,986	3%
Georgia	1,906	3%
Virginia	1,896	3%
Other States	19,142	29%

Concluding Remarks

- The 2019 data suggest that the post Hurricane Maria exodus is slowing down. Long-term migration trends are expected to continue the trajectory of the 'economic crisis period.'
- Stateside Puerto Ricans declined in New Jersey
- New York and Texas showed largest gains in Puerto Rican population
- We will have to wait for the 2020 data to ascertain whether the earthquakes and the pandemic are inducing further depopulation of the island.